

Roscommon County Transportation Authority Press Release

Roscommon County Transportation Authority Launches New Online Trip Planning Tool to Improve Rural Transit Access

Roscommon County, MI — Roscommon County Transportation Authority is excited to announce the launch of a new online trip-planning tool as part of the Advancing Rural Mobility pilot project. This initiative, funded through a United States Department of Transportation SMART grant, aims to enhance transportation access and efficiency for riders across rural Michigan.

Roscommon County Transportation Authority is one of four public transit agencies participating in this project, alongside Benzie Bus, Charlevoix County Transit, and WexExpress.

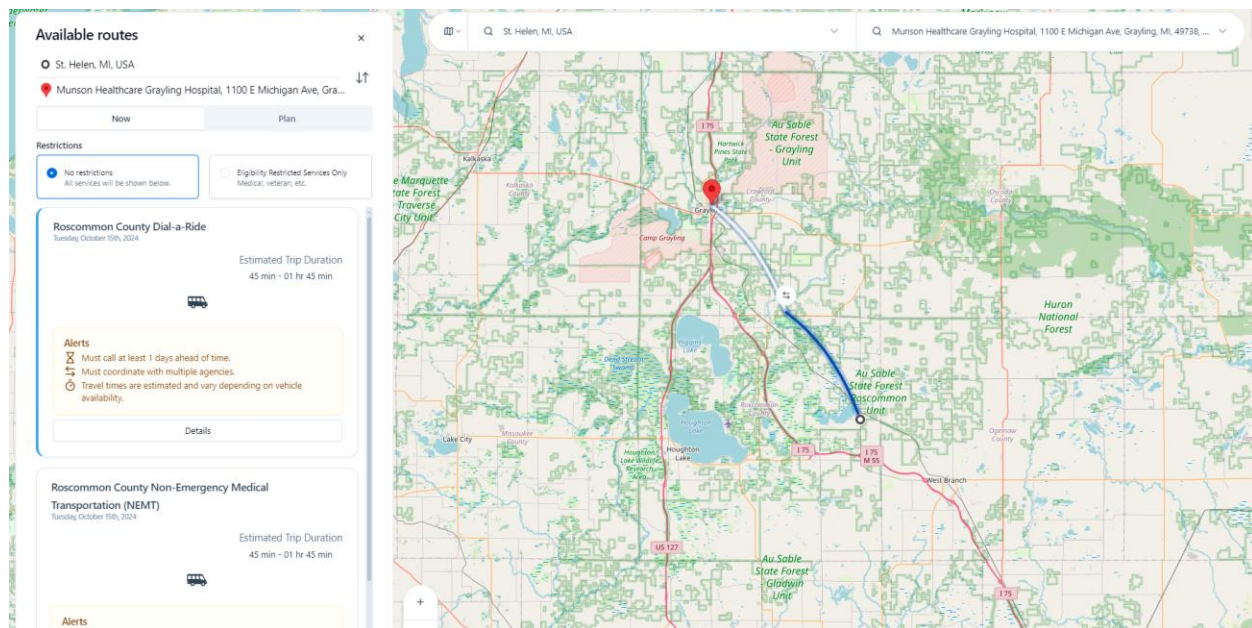
The new trip planner tool is designed to simplify the transit experience by making it easier for residents to navigate transportation options and discover the full range of services offered by the Roscommon County Transportation Authority. This user-friendly tool facilitates seamless connections with other rural transit providers, offering a more efficient way to plan trips across county lines.

When using the tool, users can enter their starting location and destination, as well as desired departure or arrival times, to receive customized route options. For instance, if you need to travel from St. Helen to Munson Healthcare in Grayling, simply enter the details, and the tool will generate a list of available transit services, including bus routes and schedules, allowing you to select the most convenient travel option.

The trip planner also provides real-time updates on transit services, ensuring riders are informed about any schedule changes or delays.

This innovative tool will allow residents to easily access information on routes, schedules, and connections, making public transportation services more accessible and predictable than ever before in Roscommon County. By improving access to public transportation, the Roscommon County Transportation Authority is helping to ensure that all residents have the resources they need to travel efficiently and conveniently.

For more information about the new trip-planning tool and how it can improve your travel experience, please visit <https://www.mitripplanner.org/help/>.



###